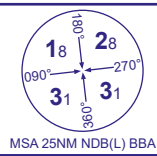


INSTRUMENT APPROACH CHART - ICAO

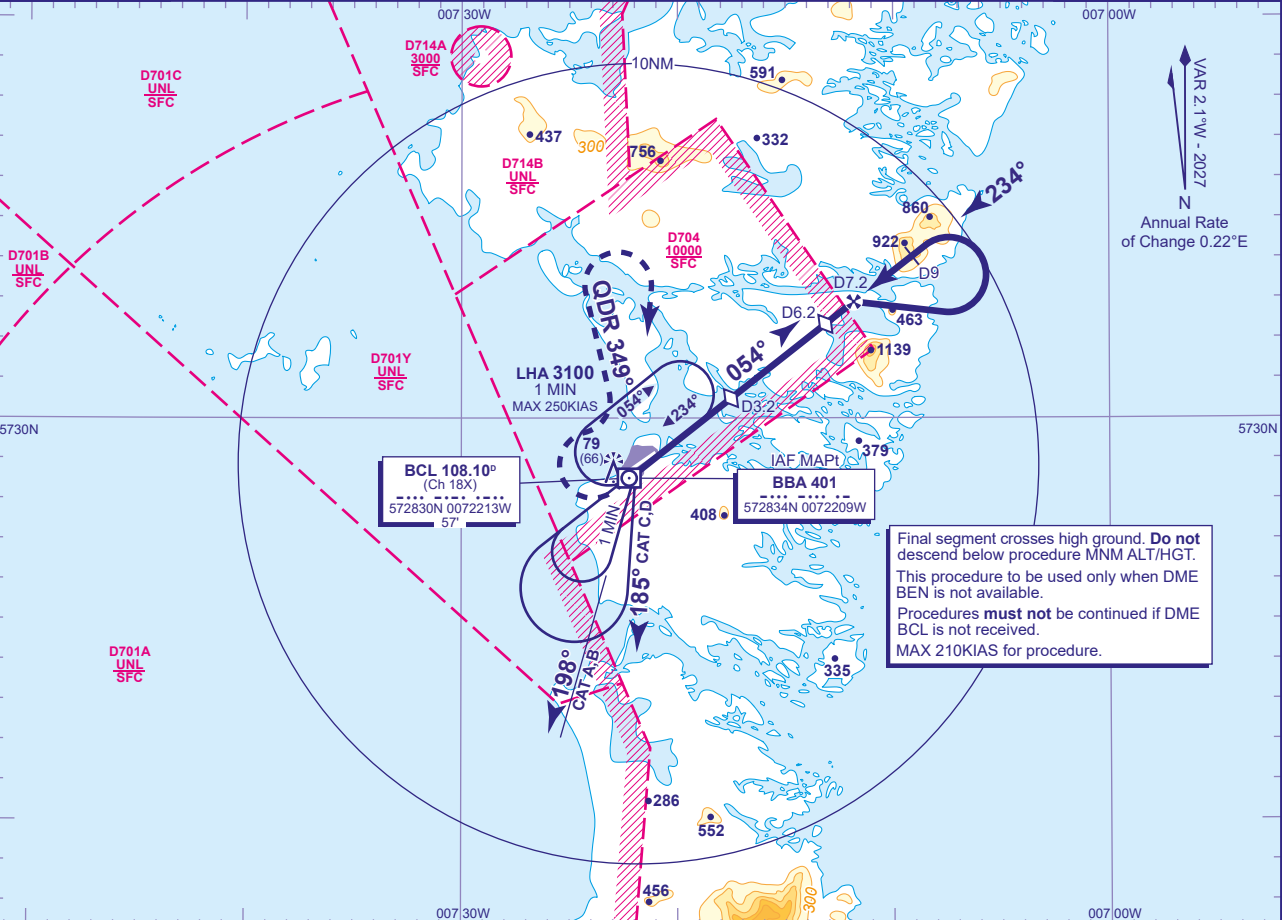
BENBECULA
NDB(L)/DME Z
RWY 24
(ACFT CAT A,B,C,D)



MSA 25NM NDB(L) BBA

APP	119.205	BENBECULA APPROACH	AD ELEVATION	19
TWR	119.205	BENBECULA TOWER	THR ELEVATION	13
AFIS	119.205	BENBECULA INFORMATION	OBSTACLE ELEVATION	79 AMSL (66) (ABOVE THR)
ATIS	129.885	BENBECULA INFORMATION		
			BEARINGS ARE MAGNETIC	

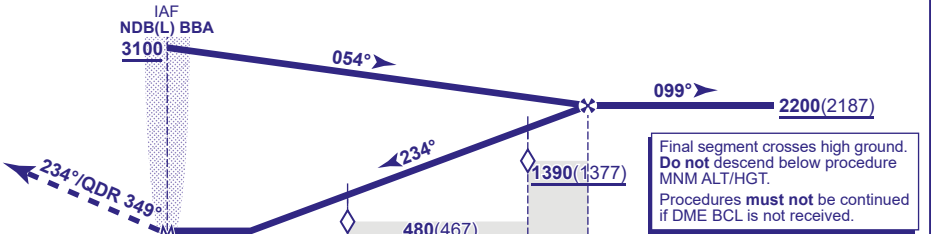
TRANSITION ALTITUDE
3000



RECOMMENDED PROFILE Gradient 5.6%, 340FT/NM

DME BCL	7	6.2 (SDF)	6	5	4	3.2 (SDF)	3	2
ALT(HGT)	2130(2117)	1860(1847)	1790(1777)	1450(1437)	1110(1097)	840(827)	770(757)	430(417)

MAPt NDB(L) BBA
Danger Areas Active:
Climb straight ahead to **520**, then climbing turn right to intercept and track **NDB(L) BBA QDR 349°** outbound.
After passing **1700**, climbing turn right to return to **NDB(L) BBA** at **3100**.
Note: No turns permitted before MAPt.



DME BCL reads 0.9NM at THR RWY 24										
Aircraft Category		A	B	C	D	Rate of descent	G/S KT	160	140	120
OCA (OCH)	Procedure	330(317)	330(317)	330(317)	330(317)		FT/MIN	910	790	680
VM(C)OCA (OCH AAL)	Total Area	470(451)	710(691)	810(791)	810(791)			100	570	450

NOTES
1 FAT is offset 3.6° from RWY 24 C/L.
2 Procedures interact with Danger Areas EGD701A, 701B, 701C, 701Y and EGD704. Procedure available subject to ATC permission.
3 To commence procedure from hold, overhead NDB(L) BBA, fly baseturn manoeuvre on CAT A,B 198°, CAT C,D 185° for 1 MIN then turn right to return to the facility on 054° **not below 3100**.

CHANGE (2/26): DME BCL ELEVATION.